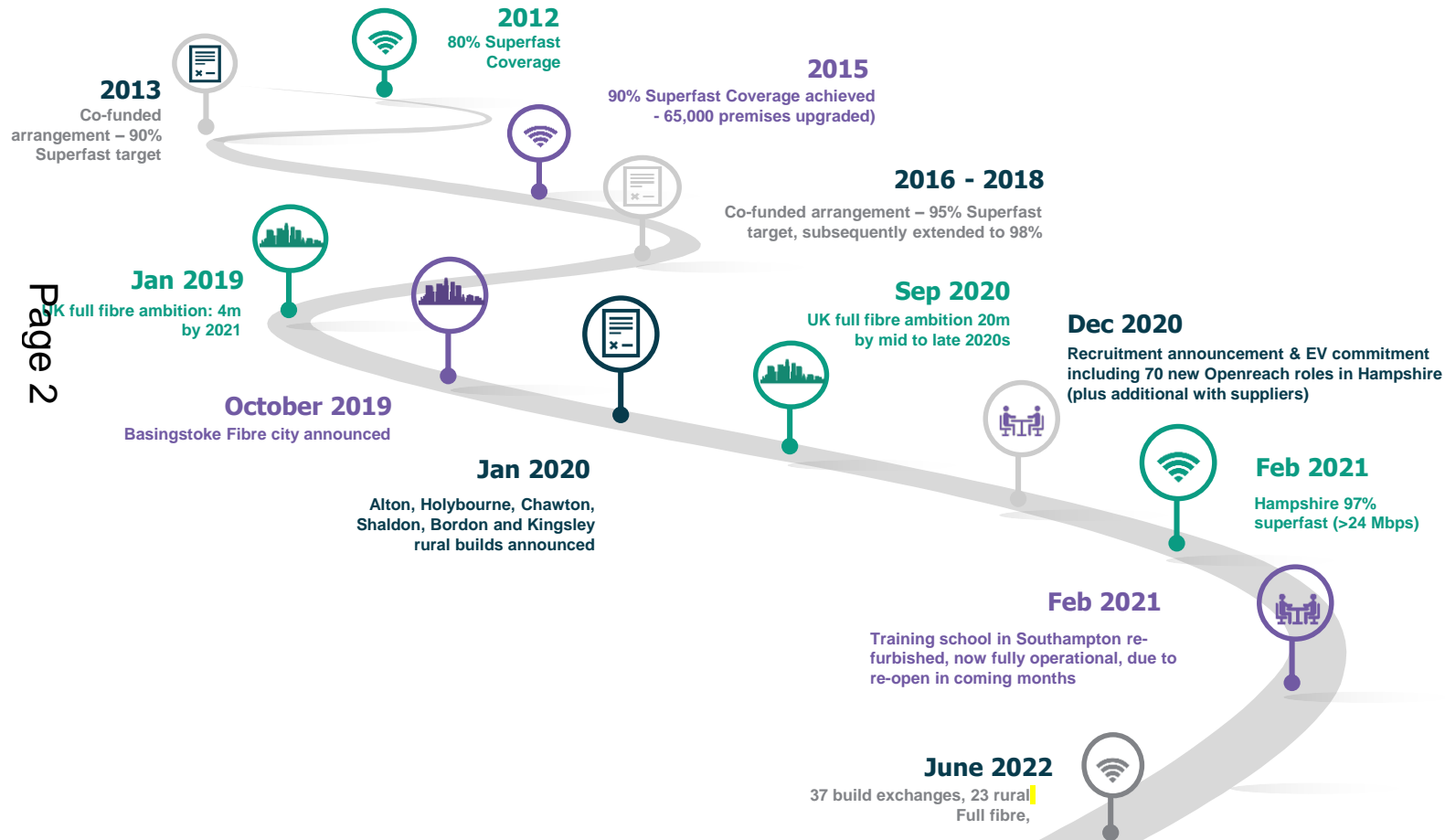


Openreach in Hampshire

Hampshire CC Policy and Resources Select Committee

Thursday 23th June 2022



Co-funded coverage in Hampshire

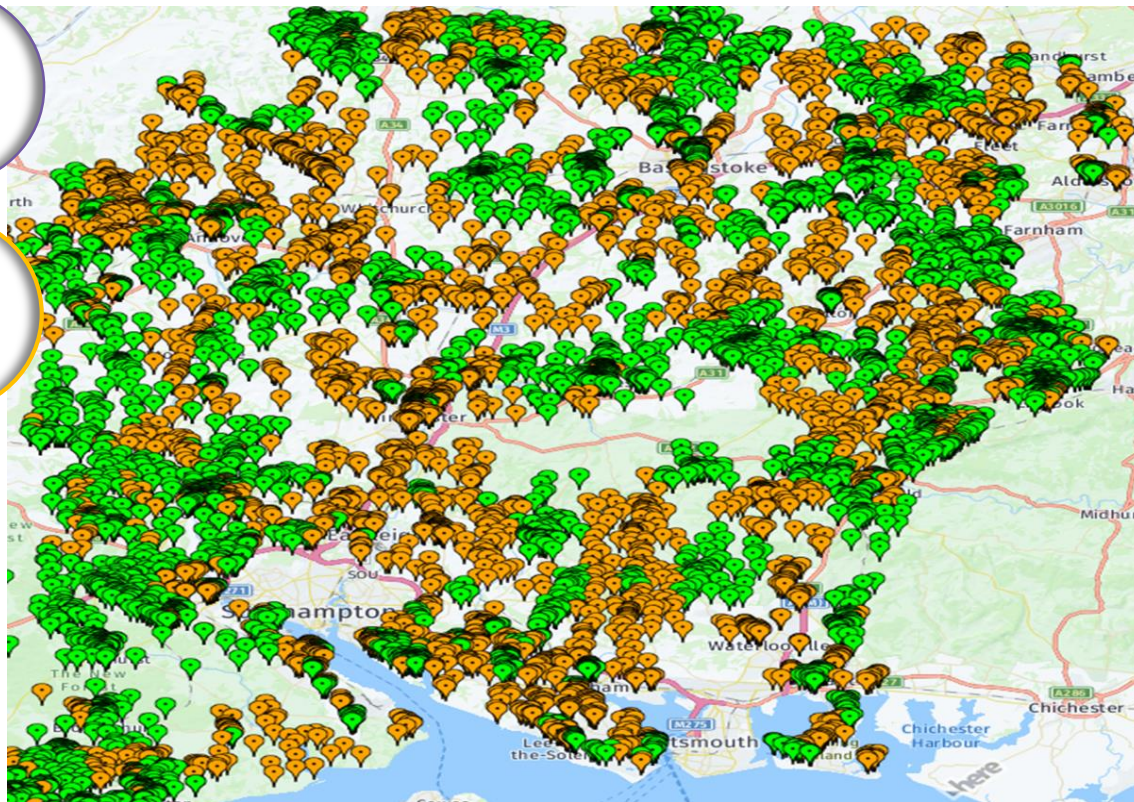
Co-funded delivery through BDUK programs

openreach

80k
premises
CRFS in
closed
BDUK
contract 1

56k
premises
CRFS in
ongoing
SEP
programme

Page 3



Programme
complete.
136k premises



Latest programme
56,284 THPIP
prems delivered
against a target
of 50,968



75% Take-up as
of March 2022



Gainshare
update to come





37 announced exchange areas in Openreach commercial build programme.

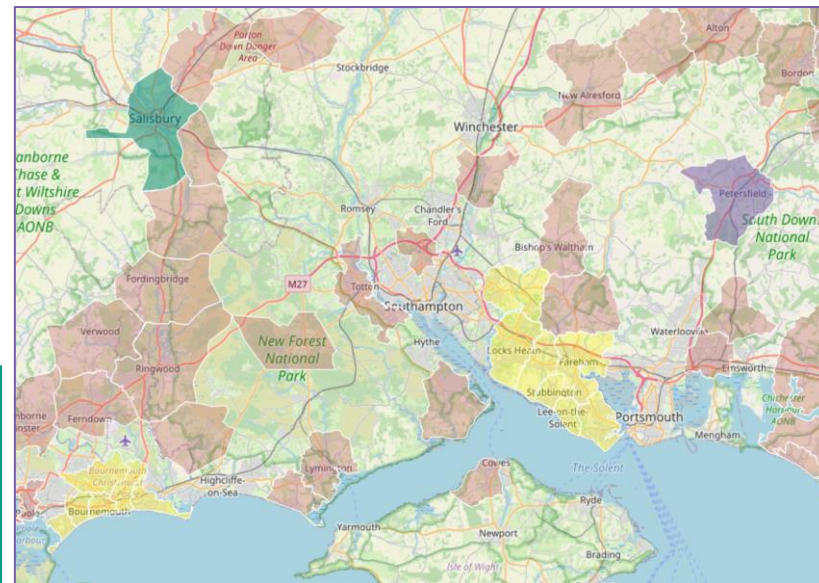


23 of these exchange areas are in the rural build programme, showing our commitment to building out to our rural communities.



Announced Exchanges

Basingstoke	Whiteley	Overton	Alton
Petersfield	Havant	Ringwood	Bordon
Yateley	Andover	Rowlands Castle	Alresford
Fareham	Totton	Turgis Green	Bassett
Gosport	Blackwater	Twyford	Bishops Waltham
Lee-On-The-Solent	Aldershot	Wallop	Dummer
Stubbington	Medstead	Whitchurch	Fawley
Titchfield	Milford On Sea	Bransgore	Fordingbridge
Botley	Odiham	Wickham	Hartley Wintney
Locks Heath	Lymington	Headley Down	
Liphook	Lyndhurst	Hook	



Full Hampshire Map & updates to the build can be found on our website [Here](#)



Area;	Total Footprint:	Customers that can place an order so far:
Basingstoke and Deane	81468	22046
East hampshire	57270	16114
Eastleigh	59627	4942
Fareham	51765	1135
Gosport	38806	1585
Hart	41606	4130
Havant	57355	1822
New Forest	85596	5700
Rushmoor	41831	1659
Test Valley	56374	7708
Winchester	55811	4927
Total	627509	71768

Key focus points



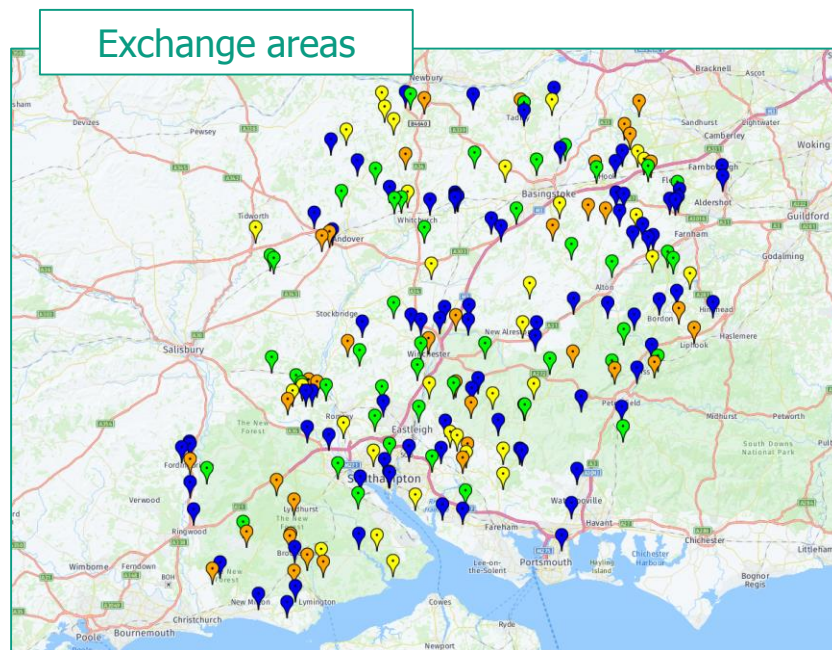
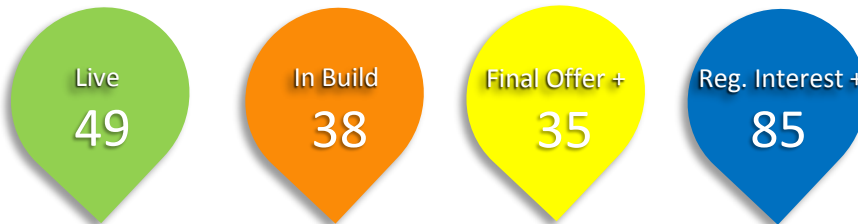
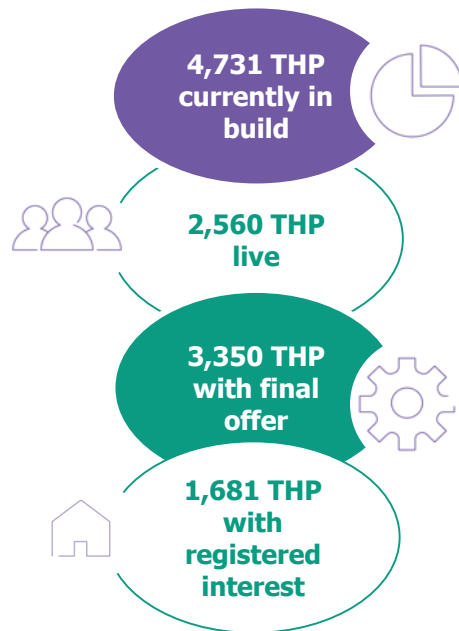
- Openreach full fibre build underway in Hampshire



- Our build we anticipate reaching approx. 75% of an exchange area.



- Full Fibre Take-up isn't automatic, end users will need to chose a service provider of their choice



Summary

- 207 communities at varying stages
- Vouchers are currently frozen across Hampshire due to Project Gigabit procurement.
- We highlighted 48 schemes to be considered in DCMS's Voucher Priority Areas (VPA).
- We are waiting for the conclusion of the procurement activity by DCMS to determine next steps

20+ Plots

Free Full Fibre for all sites

2-19 Plots

Openreach contribution to
developer cost via set rate card

Commercial New Sites

Openreach contribution to developer
cost via set rate card

openreach.co.uk/propertydevelopment



In December, Openreach announced it was creating 2,500 new jobs and an estimated 2,800 roles with partners to support the UK-wide Full Fibre build, of which **341 new roles are planned in the South East, which includes Hampshire.**

400,000 people nationally, & **64,000** in the South East could return to work by 2033 (older parents, careers and working parents)

£59 billion/£8.7bn increase in GVA for the UK/South East by 2033

1.4% increase in employment for the South East by 2033

£1,800 GVA per worker (productivity) increase in South East

At a UK level **300 million** less commuting trips, representing a carbon reduction of **360,000 tonnes**

Enabling UK & South East to **work from home**

**Centre for Economic and Business Report, Full Fibre Broadband: A Platform for Growth, Oct 2019*

openreach

The contents of this pack cannot be copied or reproduced in whole
or in part without the written consent of Openreach.
© British Telecommunications plc

This page is intentionally left blank